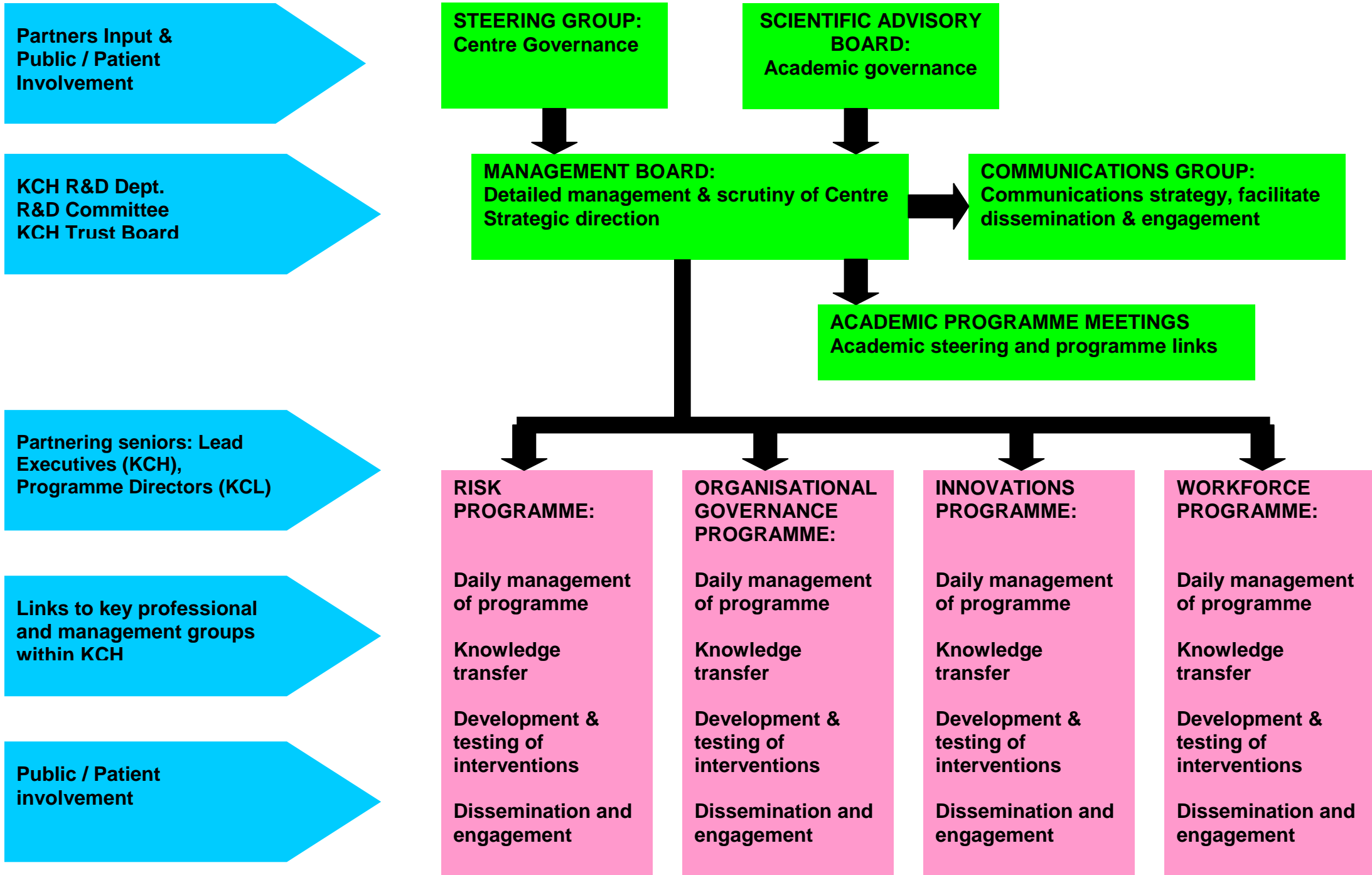


PSSQ RESEARCH CENTRE ORGANISATIONAL STRUCTURE



PSSQ RESEARCH CENTRE ORGANISATIONAL MEMBERSHIP

Steering Group:

Tim Smart – King’s College Hospital NHS Foundation Trust (KCH) Chief Executive (Chair)
Naomi Fulop - King’s PSSQ Scientific Director
Alex Gaskell - King’s PSSQ Centre Manager (Secretary)
Hiten Dodhia - Assistant Director Public health Lambeth PCT
Pida Ripley - KCH Public Governor
Tom Duffy – KCH Public Governor
Joanna Murray - Senior Lecturer IoP & SLAM Specialist BRC
Geraldine O’Dea - Acting Director Public Health Southwark PCT
Eileen Sills - Chief Nurse & Director Clinical Services GSTT
Richard Trembath / Graham Lord - Deputy / Director GSTT / Kings BRC

Scientific Advisory Board:

Mark Berg – Institute of Health Policy & Management, EU Medical Centre Erasmus University
Mike Clarke – Director, Royal United Services Institute
Malcolm Lowe-Lauri – Chief Executive, (University Hospitals of Leicester NHS Trust)
Lorna McKee – Chair in Management Studies, Business School, University of Aberdeen
John Øvretveit – Director of Research, Medical Management Centre, Karolinska Institutet
Jaap Paauwe – Faculty of Social & Behavioural Sciences, Tilburg University
Andrew Webster – Director of Science and Technology, University of York
Naomi Fulop – King’s PSSQ Scientific Director
David Guest – King’s PSSQ Managing Director
Jane Sandall – King’s PSSQ Programme Director
Janet Anderson – King’s PSSQ Programme Director

Management Board:

David Guest – King’s PSSQ Managing Director (Chair)
Naomi Fulop – King’s PSSQ Scientific Director
Alex Gaskell – King’s PSSQ Centre Manager
Jane Sandall – King’s PSSQ Programme Director
Janet Anderson – King’s PSSQ Programme Director
Jules Wendon / Tim Newton - KCH R&D Director / Deputy Director
Zoe Lelliott – KCH Deputy Head of Strategy & R&D Management
Jane Walters – KCH Director of Corporate Affairs
Geraldine Walters – KCH Director of Nursing
Michael Marrinan – KCH Medical Director
Angela Huxham – KCH Director of Workforce